

**PERFORM  
WITH  
PRECISION**

**SHORFAST™**

**CONCRETE  
CONSTRUCTION  
SOLUTIONS**

**BROCHURE**



**SYMONS®**

By Dayton Superior



## ShorFast Tables

ShorFast tables are created by combining legs, frames and deck components into a table configuration which can easily be flown or rolled from pour to pour. High capacity aluminum legs and jacks provide efficient support spacings. Wheel assemblies move easily from table to table.

## ShorFast Leg Assembly

ShorFast legs are entirely aluminum. The body is extruded with four large keyways to accept ShorFast Frames and provides a positive rigid connection. The top and bottom plates are aluminum with four bolt holes to enable legs to be bolted together and a center hole to accept the ShorFast Jack.



Size		Weight	
m	ft-in	kg	lbs
0.5	1'-7"	4.4	8.8
1.5	4'-11"	11	22.0
2.0	6'-6"	14.3	28.6
2.5	8'-2"	18.7	37.4
3.3	9'-10"	21.7	47.9
4.0	13'-2"	28.5	57.0

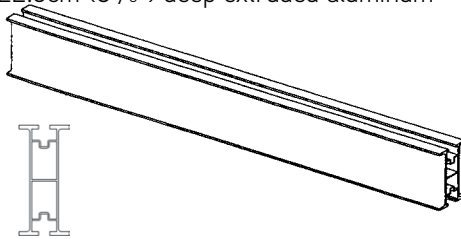
## Frames

The ShorFast Frames are entirely aluminum. The side members are extruded with a location key that fits neatly into the ShorFast Leg to give a positive and rigid connection. They are secured to the leg using four "T" bolts and hand tightened via a large cast collar nut. The top member is an Omega (W) shaped extrusion to enable suitable boards to set on top for access and edge beams.

Size		Weight	
m	ft-in	kg	lbs
1.0	3'-3"	9.0	19.8
2.0	6'-7"	13.0	28.6
3.0	9'-10"	15.5	34.1

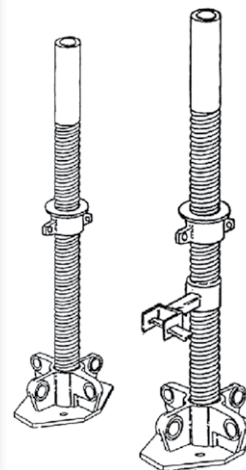
## ShorFast Beam

The ShorFast Beam is a 22.5cm (8<sup>7</sup>/<sub>8</sub>" ) deep extruded aluminum stringer. The beam weighs 8.7kg/m (5.8lbs/ft). Beams are secured to the legs of jacks with a ShorFast Beam Clip that connects in the groove of the beam. The light weight and high capacity of the beam further enhances the productivity of this system.



## Jacks

The ShorFast Jacks are manufactured entirely from aluminum. The collar has a self cleaning thread to make adjustments easy. The jack base has four brace lugs to accept Trigger Braces when required.

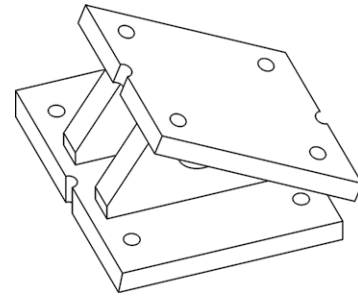


Size		Weight		Range
m	in	kg	lbs	in
1.1	43"	8.0	17.6	5"-32"
1.6	63"	11.7	23.3	7"-52"



### Wheel Assemblies

Wheel Assemblies are available in two sizes to match the 1.1m or 1.6m jacks. The top of each assembly is connected to the ShorFast leg with the attached T-nut collar assembly. The bottom is quickly connected to the jack with a pin and clip.

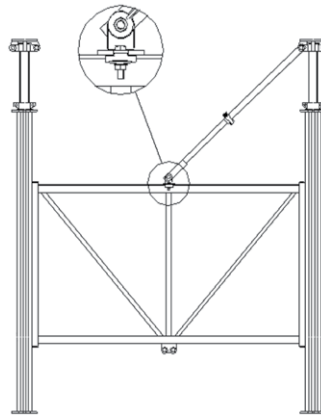
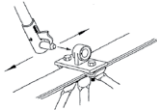


### Sloping Head Assembly

These units can accommodate a sloped surface up to 45° from horizontal without the need for wood wedges. They bolt directly to the leg end plate or the ShorFast jack.

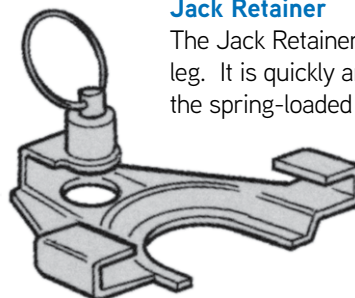
### Trigger Braces

Trigger Braces decrease the effective lengths of the legs and therefore increase their safe load carrying capacity. The trigger locking mechanism allows them to be attached or removed quickly, without loose bolts and nuts.



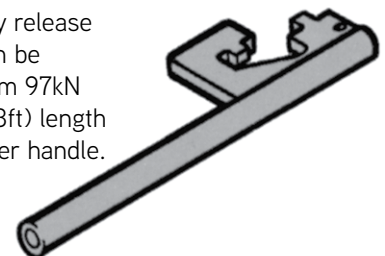
### Jack Retainer

The Jack Retainer keeps the jack from slipping out of the leg. It is quickly and easily attached or removed by pulling the spring-loaded locking pin.

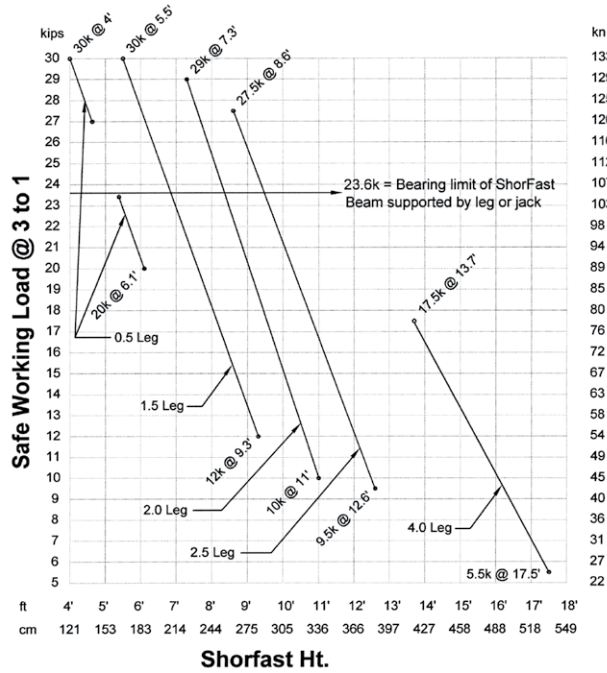


### Spanner

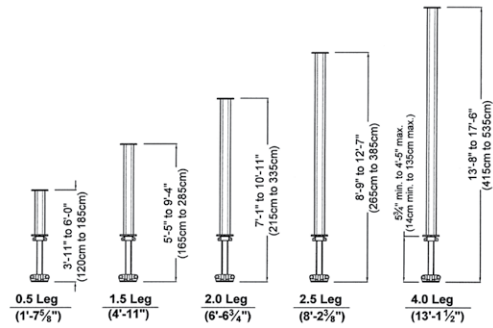
The ShorFast Spanner facilitates easy release of the Screw Jacks. The spanner can be used as it is up to 97kN (22kips). From 97kN (22kips) to 133kN (30kips), a 90cm (3ft) length of pipe can be slipped over the spanner handle.



## ShorFast Post Shore Safe Working Load (One leg and one jack)

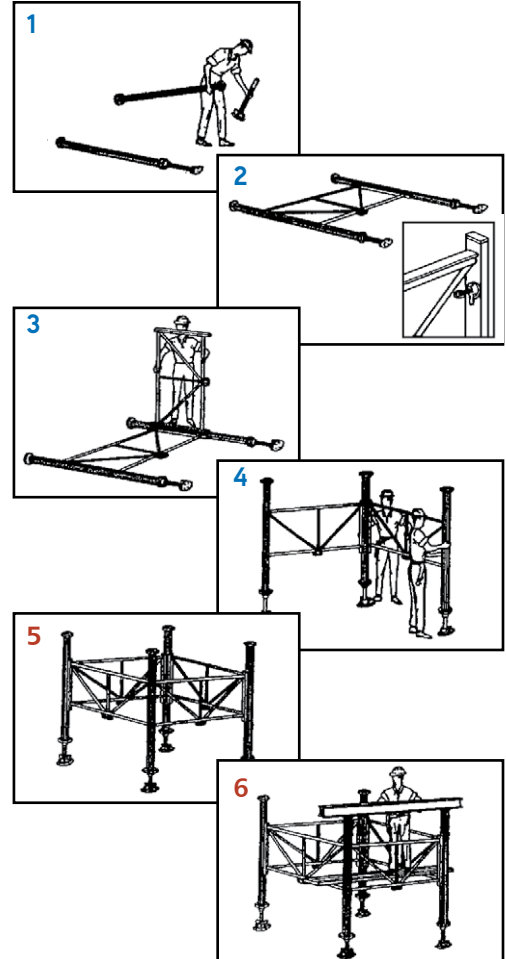


## ShorFast Leg Sizes



## ShorFast Erection Guide

1. Two operators place pre-adjusted ShorFast Jacks into two ShorFast Legs lying on the ground.
2. A ShorFast Frame is then attached to the ShorFast Legs while they are still on the ground.  
Note the secure fixing of the ShorFast Frames to the ShorFast Legs is confirmed by the horizontal orientation of the split ring on the end of each Fixing Bolt.
3. A second ShorFast Frame is then attached to one of the ShorFast Legs, at right angles to the first frame, checking the fixings as noted above.
4. The assembly is then stood up and held by one of the operators. A third ShorFast Leg and Jack are then connected to the free end of the second ShorFast Frame.
5. The fourth ShorFast Jack and Leg and the remaining two ShorFast Frames are then assembled to complete a ShorFast Tower. Further ShorFast Frames and Legs are then added until the required make-up has been achieved.
6. At this point, access must be provided for erecting the remainder of the support system. There are various options available for providing a working platform with the ShorFast system and materials for the most suitable can be supplied on request. ShorFast stringers are then placed on top of ShorFast Legs, Jacks or Frames, and must be immediately fixed in place using ShorFast Light Beam Clips.







# INNOVATION CENTER

## REAL-WORLD SOLUTIONS INSPIRED BY YOUR VISION

Your vision is to take concrete construction to new heights. We turn that vision into real-world solutions through precision research and development, testing and technology.

Together we are redefining what is possible in the concrete construction industry. Our Innovation Center is comprised of:

- **A state of the art chemical lab**
- **A full-featured mechanical test facility**
- **Product demonstration areas**
- **Contemporary training and meeting areas**

Bring us your ideas and we will deliver your solution.

Call today: **888-977-9600**



Perform with Precision™



**DAYTON**<sup>®</sup>  
**SUPERIOR**

1125 Byers Road  
Miamisburg, OH 45342  
937-866-0711  
888-977-9600

**PERFORM  
WITH  
PRECISION**

SYM91166  
01/16

Copyright © 2016 Dayton Superior Corporation, All Rights Reserved.